

LED Undercabinet Lighting Fixtures



APPLICATIONS

Allows for easy replacement of existing fluorescent, incandescent, halogen and xenon under cabinet lighting. Built-in driver, captive screws and knockouts for easy installation in new work or remodel applications.

FEATURES

Built-in integral electronic driver.

Dimmable 120V.

On / Off rocker switch.

≥ 80 or ≥90 CRI.

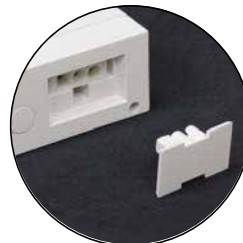
Rear panel punch-in electrical connectors for easy wiring.

Available in 2700K.

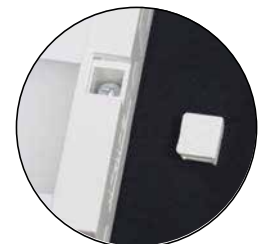
50,000 hour life expectancy.

Linkable up to 400W.

5 year warranty on all electronics and housing.



Link several undercabinets together with the Linkable Connector Wire



Pre-positioned installation screws

Under Cabinet Included Accessories



Captive Screws (pre-installed on each fixture)

Plastic Washers

Wire Connectors

End-to-End Connectors

Rocker Switch

3/8" Diecast Connector

Under Cabinet Available Accessories



Power Cords

Linkable Connector with Wire (available in four lengths)

Junction Boxes



MODEL	DESCRIPTION	INPUT VOLTAGE	CRI	WATTAGE	LUMENS	COLOR
BELEDUC11WH	Undercabinet Light - 11" x 3 1/2"	120V	≥90	6W	470	White
BELEDUC22WH	Undercabinet Light - 22" x 3 1/2"	120V	≥90	11W	750	White
BELEDUC36WH	Undercabinet Light - 36" x 3 1/2"	120V	≥90	16W	1130	White
BELEDUC48WH	Undercabinet Light - 48" x 3 1/2"	120V	≥90	18W	1430	White